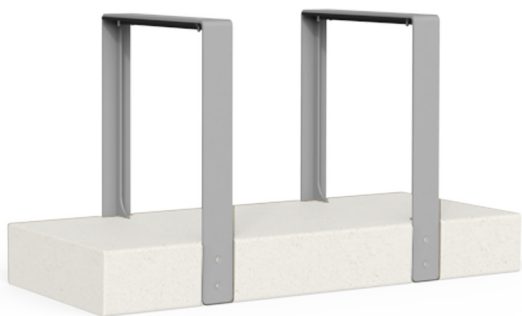


## “T-BIKE” bicycle rack

**Sheet code:** PBAR008  
**Drawing code:** -  
**Revision:** 23/01/2019

**Designer:**  
 Massimo Tasca



**Product:** Bicycle rack mod. “T-BIKE” composed with a self-supporting base and two steel structures to park the bike. The spacing between the elements is of 600 mm to guarantee a simply parking of the bikes. The formal symmetry permits the use on both sides.

**Dimensions:** length: 1200 mm;  
 width: 500 mm;  
 height: 805 mm;  
 total weight: 240 kg.

**Material:** The base can be manufactured using natural marble stones conglomerate or white granite. The top element follows a rectangular pattern, is 90 mm wide, and is made of a bent, reinforced bracket in galvanized and painted steel. Upon request, it could be equipped with a rubber strip to protect the bike.

**Reinforcing:** The base is reinforced

**Finishing:** All the base surfaces are sandblasted and then covered with a transparent anti-decay coating, or, upon request, with anti-graffiti products. All edges are rounded or made blunt. The metallic structure's surface and the supports are treated with protective anti-decay coating, hot dip galvanized and painted RAL7021.

**Handling:** Use appropriate equipment when handling

**Installation:** Simply place on the flooring.

