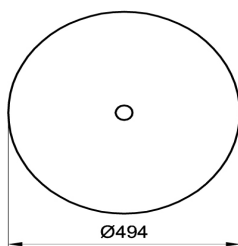
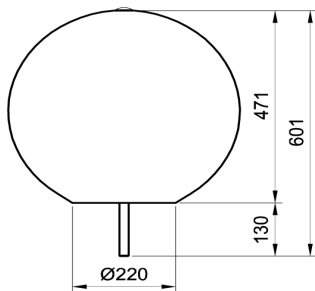


## “SFERA” Bollard ø500 without tang

Sheet code: **DIPP009**  
Drawing code:  
Revision: **23/01/2019**

**Designer:**  
Bellitalia Design Department



**Product:** Monolithic bollard model “SFERA ø500” without tang, with thread bar M20 for its fastening to the ground.

**Dimensions:** external diameter: 494 mm;  
maximum height: 641 mm;  
total weight: 161 kg;

**Material:** The bollard can be manufactured using reconstituted natural marble stones, white granite or grey concrete conglomerate. Steel thread bar M20.

**Reinforcing:** The bollard is reinforced and fitted with a bush that permits its lifting. Steel thread bar M20.

**Finishing:** The bollard’s surface can be polished, to give the product a shiny effect, or bush-hammered, for a rough appearance. The surface is then covered with a transparent anti-decay coating, or, upon request, with anti-graffiti products.

**Handling:** Use appropriate equipment when handling, screwing the eyebolt to the bush.

**Installation:** Drill a hole in the flooring, with a diameter of at least 24 mm and a depth of 150 mm; fill the hole with bi-component chemical anchors and introduce the bollard and the thread bar. If required, replace the lifting eyebolt with the specific brass screw.