

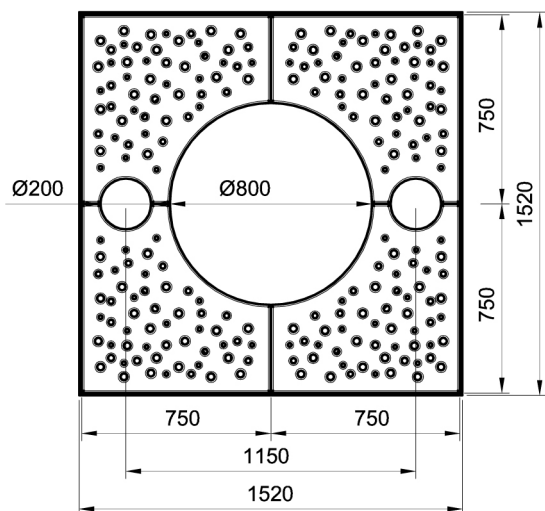
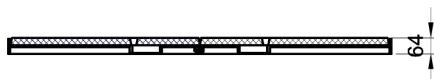
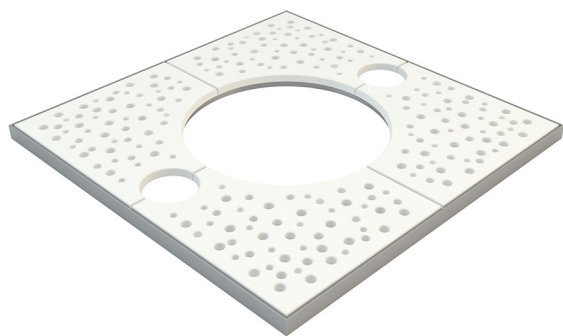
“BUBBLE SQUARE ILLUMINAZIONE” Tree grid

Sheet code: **PRAR003**

Drawing code:

Revision: **31/01/2019**

Designer:
Bellitalia Design Department



Product: Tree grid model “BUBBLE SQUARE ILLUMINAZIONE”, composed by four plates with holes of different diameters to ensure the water flow to the plant’s roots. The plates’ alignment is guaranteed by a frame fixed to the underpinning. In addition to the central bigger hole for the plant, there are two smaller holes that lodge embedded spotlights for ground illumination.

Dimensions: length: 1524 mm;
width: 1524 mm;
maximum height: 64 mm;
total weight: 176 kg (139 kg for the plates)

Material: The plates are manufactured in UTC® (Ultratense Concrete®), a material belonging to the UHPC class (ultra high performance concrete); a high performance concrete material made by Bellitalia® and supplied in different colours: blue, white or different colours (see data sheet).

Reinforcing: No reinforcing.

Finishing: All surfaces are smooth natural; visible surfaces are covered with a transparent anti-decay coating, or, upon request, with nanotechnology and/or anti-graffiti products. All metallic parts are treated by a hot dip galvanisation. All edges are rounded or made blunt. (Please see respective material sheet).

Handling: Use appropriate equipment when handling.

Installation: Place the plant and the cables and prepare a perimetral levelled underpinning; then place the frame, fixing it with lean concrete. Insert the plates wire up the spotlights. The frame needs to be placed on a surface in mortar or concrete perfectly levelled on the four sides, without leaving any free part. In any other specific case, please contact Bellitalia® explaining the expected modifications. If the tree grid is used without frame, put a soft material under the grid and then proceed with the installation, carefully positioning the sectors.

Notes: Slight variations in colour and finishing, as for example micro-cracking, different shades on surfaces or rising of oxides, are natural phenomena related to the products’ manufacturing and maturing processes. The colour shown in the samples is just approximate, and different shades of colour shall not be intended as nonconformity of the product. Bellitalia will not accept claims or demands for damages related to colours variations, as they belong to the material’s inner characteristics and depend on environmental conditions during the manufacturing and maturing processes.

(image and drawing: version with frame)